



# Certificate of Analysis

## CANNABUSINESS LABORATORIES, LLC

### Customer:

Total CBD Shop, LLC/Crush Global  
11414 Shelbyville Road

Louisville, KY 40243

Received Date **8/15/2022**

COA Released **8/16/2022**

Comments

Sample ID **220815039**

Order Number **CB220815016**

Sample Name **Full Spectrum CBD Oil  
500mg Mint**

External Sample ID

Batch Number

Product Type **Other**

Sample Type **Other**

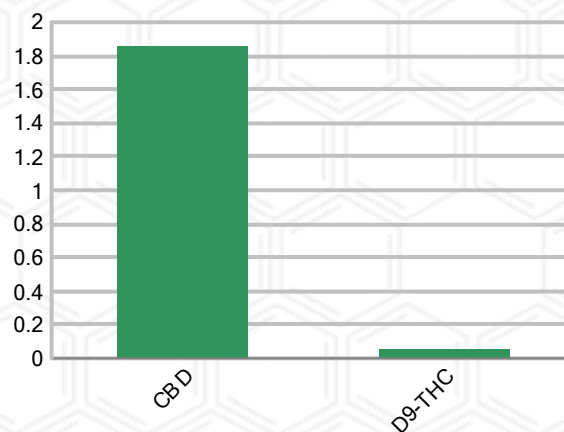
### CANNABINOID PROFILE

Analyte	LOQ (%)	% Weight	mg/g
CBC	0.01	ND	ND
CBD	0.01	1.858	18.58
CBDa	0.01	ND	ND
CBDV	0.01	ND	ND
CBG	0.01	ND	ND
CBGa	0.01	ND	ND
CBN	0.01	ND	ND
d8-THC	0.01	ND	ND
d9-THC	0.01	0.053	0.530
THCa	0.01	ND	ND
<b>Total Cannabinoids</b>		<b>1.911</b>	<b>19.11</b>
<b>Total Potential THC</b>		<b>0.053</b>	<b>0.530</b>
<b>Total Potential CBD</b>		<b>1.858</b>	<b>18.58</b>
<b>Total Potential CBG</b>		<b>N/A</b>	<b>N/A</b>
<b>Ratio of Total Potential CBD to Total Potential THC</b>			<b>35.06 : 1</b>
<b>Ratio of Total Potential CBG to Total Potential THC</b>			<b>N/A</b>

### SAMPLE IMAGE



### CANNABINOIDS % Weight



\*Total Cannabinoids refers to the sum of all cannabinoids detected.

\*Total Potential CBD = (0.877 x CBDa) + CBD. \*Total Potential THC = (0.877 x THCa) + THC. \*Total Potential CBG = (0.877 x CBGa) + CBG.

\*Total Potential THC/CBD are calculated to take into account the loss of an acid group during decarboxylation.



Accreditation #109588

*Jamie Hobgood*  
Laboratory Manager

SIGNATURE

Jamie Hobgood

LABORATORY MANAGER

08/16/2022 1:16 PM

DATE

This product has been tested by CannaBusiness Laboratories using validated testing methodologies and a quality system. Values reported relate only to the product tested. CannaBusiness Laboratories makes no claims as to the efficacy, safety, or other risks associated with any detected or non-detected levels of any compounds reported herein. This Certificate shall not be reproduced except in full, without the written permission of CannaBusiness Laboratories. Photo is of sample received by the lab and may vary from final packaging. The results apply to the sample as received.



# Certificate of Analysis

## CANNABUSINESS LABORATORIES, LLC

### Customer

Total CBD Shop, LLC/Crush Global  
11414 Shelbyville Road  
Louisville, KY 40243



### Overall Batch Results

Pesticide	Moisture Content
Potency	Water Activity
Mycotoxins	Heavy Metals
Microbial Screen	Residual Solvents
Terpenoids	

**Sample Name:** Full Spectrum CBD Oil  
500mg Mint  
**Sample ID:** 220815039  
**Order Number:** CB220815016  
**Product Type:** Other  
**Sample Type:** Other  
**Received Date:** 08/15/2022  
**Batch Number:**  
**COA released:** 08/16/2022 1:16 PM

### Potency (mg/g)

Date Tested: 08/03/2022

Method: CB-SOP-028

Instrument:

<b>0.053 %</b> Total THC	<b>1.858 %</b> Total CBD	<b>1.911 %</b> Total Cannabinoids	<b>19.11 mg/g</b> Total Cannabinoids
-----------------------------	-----------------------------	--------------------------------------	---

Analyte	Result	Units	LOQ	Result	Units
CBC (Cannabichromene)	ND	%	0.010	ND	mg/g
CBD (Cannabidiol)	1.858	%	0.010	18.58	mg/g
CBDa (Cannabidiolic Acid)	ND	%	0.010	ND	mg/g
CBDV (Cannabidivarin)	ND	%	0.010	ND	mg/g
CBG (Cannabigerol)	ND	%	0.010	ND	mg/g
CBGa (Cannabigerolic Acid)	ND	%	0.010	ND	mg/g
CBN (Cannabinol)	ND	%	0.010	ND	mg/g
D8-THC (D8-Tetrahydrocannabinol)	ND	%	0.010	ND	mg/g
D9-THC (D9-Tetrahydrocannabinol)	0.053	%	0.010	0.530	mg/g
THCa (Tetrahydrocannabinolic Acid)	ND	%	0.010	ND	mg/g



*J. Hobgood*  
Laboratory Manager

Jamie Hobgood

08/16/2022 1:16 PM

SIGNATURE

DATE

NT = Not tested, ND = Not detected; LOQ = Limit of Quantitation; <LOQ = Detected; >ULOL = Above upper limit of linearity; CFU/g = Colony forming units per 1 gram; TNTC = Too numerous to count

This product has been tested by CannaBusiness Laboratories using validated testing methodologies and a quality system. Values reported relate only to the product tested. CannaBusiness Laboratories makes no claims as to the efficacy, safety, or other risks associated with any detected or non-detected levels of any compounds reported herein. This Certificate shall not be reproduced except in full, without the written permission of CannaBusiness Laboratories. Photo is of sample received by the lab and may vary from final packaging. The results apply to the sample as received.