



Certificate of Analysis

CANNABUSINESS LABORATORIES, LLC

Customer:

Total CBD Shop, LLC/Crush Global
11414 Shelbyville Road

Louisville, KY 40243

Received Date **8/15/2022**

COA Released **8/16/2022**

Comments

Sample ID **220815040**

Order Number **CB220815016**

Sample Name **Full Spectrum CBD Oil
750mg Mint**

External Sample ID

Batch Number

Product Type **Other**

Sample Type **Other**

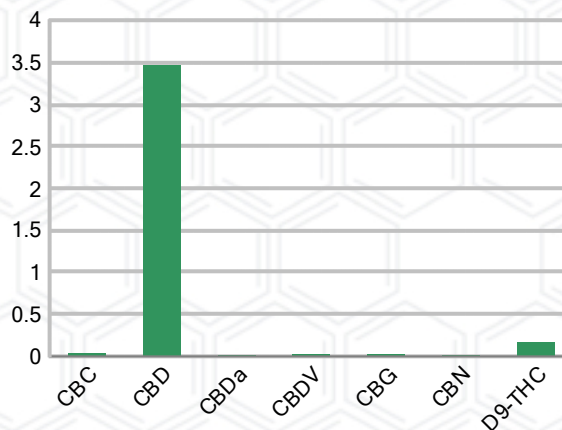
CANNABINOID PROFILE

Analyte	LOQ (%)	% Weight	mg/g
CBC	0.01	0.033	0.329
CBD	0.01	3.469	34.69
CBDa	0.01	0.013	0.135
CBDV	0.01	0.021	0.205
CBG	0.01	0.026	0.256
CBGa	0.01	ND	ND
CBN	0.01	0.012	0.121
d8-THC	0.01	ND	ND
d9-THC	0.01	0.164	1.638
THCa	0.01	ND	ND
Total Cannabinoids		3.737	37.37
Total Potential THC		0.164	1.638
Total Potential CBD		3.481	34.81
Total Potential CBG		0.026	0.256
Ratio of Total Potential CBD to Total Potential THC			21.23 : 1
Ratio of Total Potential CBG to Total Potential THC			0.16 : 1

SAMPLE IMAGE



CANNABINOIDS % Weight



*Total Cannabinoids refers to the sum of all cannabinoids detected.

*Total Potential CBD = (0.877 x CBDa) + CBD. *Total Potential THC = (0.877 x THCa) + THC. *Total Potential CBG = (0.877 x CBGa) + CBG.

*Total Potential THC/CBD are calculated to take into account the loss of an acid group during decarboxylation.




Laboratory Manager

SIGNATURE

Jamie Hobgood

LABORATORY MANAGER

08/16/2022 1:17 PM

DATE

This product has been tested by CannaBusiness Laboratories using validated testing methodologies and a quality system. Values reported relate only to the product tested. CannaBusiness Laboratories makes no claims as to the efficacy, safety, or other risks associated with any detected or non-detected levels of any compounds reported herein. This Certificate shall not be reproduced except in full, without the written permission of CannaBusiness Laboratories. Photo is of sample received by the lab and may vary from final packaging. The results apply to the sample as received.



Certificate of Analysis

CANNABUSINESS LABORATORIES, LLC

Customer

Total CBD Shop, LLC/Crush Global
11414 Shelbyville Road
Louisville, KY 40243



Overall Batch Results

Pesticide	Moisture Content
Potency	Water Activity
Mycotoxins	Heavy Metals
Microbial Screen	Residual Solvents
Terpenoids	

Sample Name: Full Spectrum CBD Oil
750mg Mint
Sample ID: 220815040
Order Number: CB220815016
Product Type: Other
Sample Type: Other
Received Date: 08/15/2022
Batch Number:
COA released: 08/16/2022 1:17 PM

Potency (mg/g)

Date Tested: 08/03/2022

Method: CB-SOP-028

Instrument:

0.164 % Total THC	3.481 % Total CBD	3.737 % Total Cannabinoids	37.37 mg/g Total Cannabinoids
-----------------------------	-----------------------------	--------------------------------------	---

Analyte	Result	Units	LOQ	Result	Units
CBC (Cannabichromene)	0.033	%	0.010	0.329	mg/g
CBD (Cannabidiol)	3.469	%	0.010	34.69	mg/g
CBDa (Cannabidiolic Acid)	0.013	%	0.010	0.135	mg/g
CBDV (Cannabidivarin)	0.021	%	0.010	0.205	mg/g
CBG (Cannabigerol)	0.026	%	0.010	0.256	mg/g
CBGa (Cannabigerolic Acid)	ND	%	0.010	ND	mg/g
CBN (Cannabinol)	0.012	%	0.010	0.121	mg/g
D8-THC (D8-Tetrahydrocannabinol)	ND	%	0.010	ND	mg/g
D9-THC (D9-Tetrahydrocannabinol)	0.164	%	0.010	1.638	mg/g
THCa (Tetrahydrocannabinolic Acid)	ND	%	0.010	ND	mg/g



J. Hobgood
Laboratory Manager

Jamie Hobgood

08/16/2022 1:17 PM

SIGNATURE

DATE

NT = Not tested, ND = Not detected; LOQ = Limit of Quantitation; <LOQ = Detected; >ULOL = Above upper limit of linearity; CFU/g = Colony forming units per 1 gram; TNTC = Too numerous to count

This product has been tested by CannaBusiness Laboratories using validated testing methodologies and a quality system. Values reported relate only to the product tested. CannaBusiness Laboratories makes no claims as to the efficacy, safety, or other risks associated with any detected or non-detected levels of any compounds reported herein. This Certificate shall not be reproduced except in full, without the written permission of CannaBusiness Laboratories. Photo is of sample received by the lab and may vary from final packaging. The results apply to the sample as received.